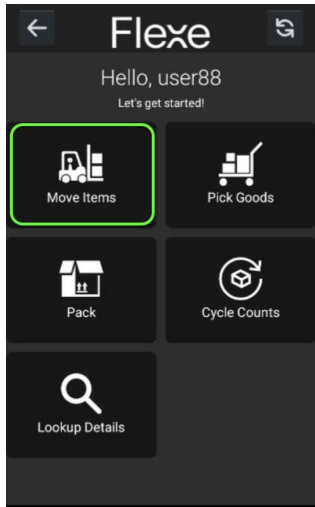


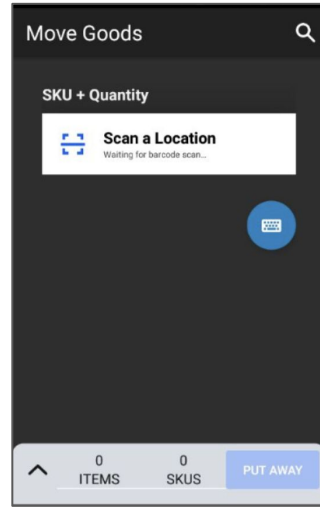
# Flexe Job Aid - Move Items (Non-LPN)

How to move inventory to preferred locations on Flexe mobile devices.

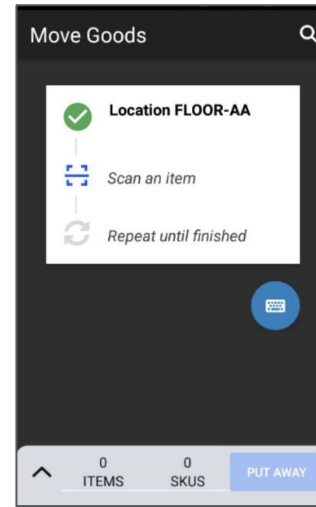
- 1** Select **Move Items** from the home screen.



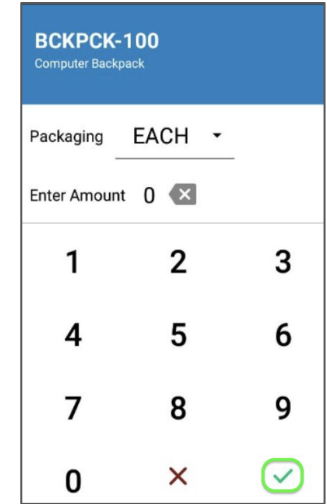
- 2** Scan the current location.



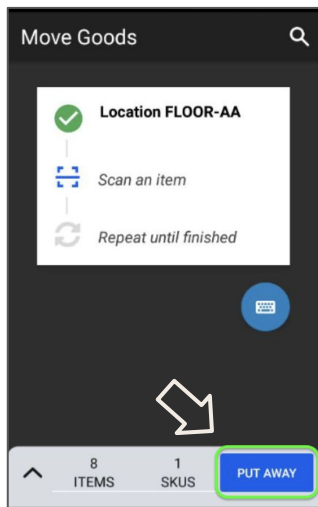
- 3** Scan the SKU.



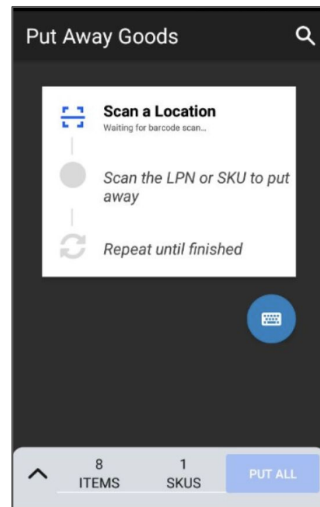
- 4** Enter the **Packaging** type and **Amount**.



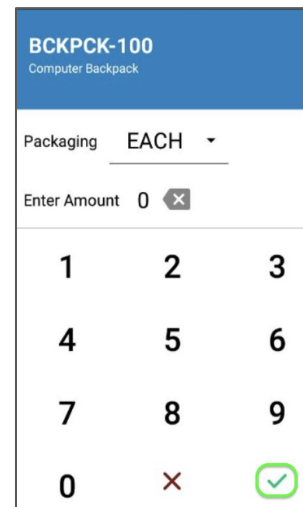
- 5** Select **Put Away** in the bottom menu.



- 6** Scan the new location, then scan the SKU again.



- 7** Enter the **Packaging** type and **Amount**.



- 8** Check for the confirmation message.

